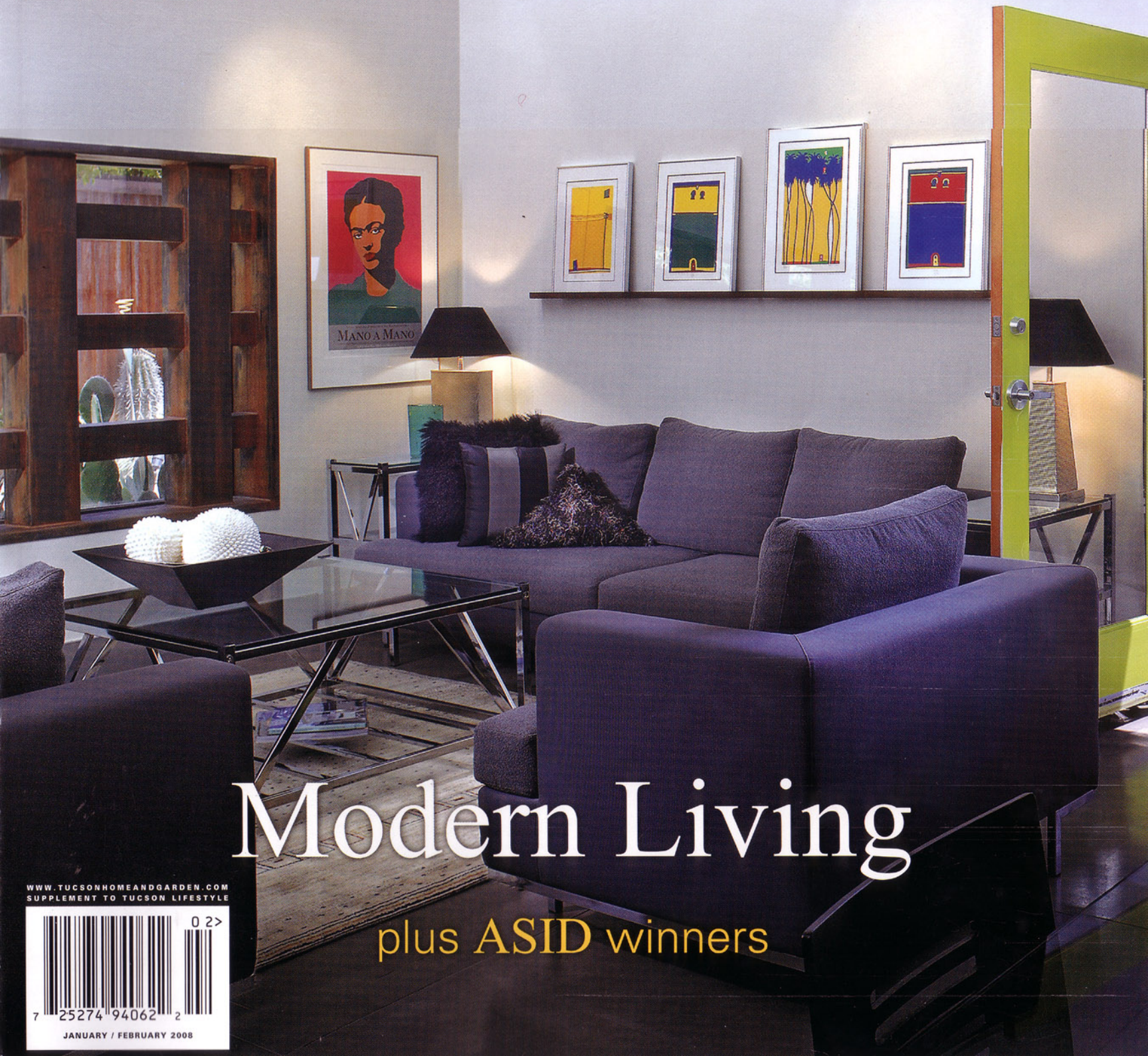


Tucson Lifestyle HOME & GARDEN



Modern Living

plus ASID winners

WWW.TUCSONHOMEANDGARDEN.COM
SUPPLEMENT TO TUCSON LIFESTYLE



JANUARY / FEBRUARY 2008

Contents

FEATURES

- 18 Regional Artist: Thomas Blee Carlyle**
by Aaron Carter
The plaster walls of this stunning Southwest-style home form a canvas for artist Thomas Blee Carlyle.
- 26 Barrio Redefined**
by Stefanie Teller
Eileen and DeWayne White had their sights set on moving south of the border... but chose a very modern home in a historic Old Pueblo neighborhood.
- 32 Formed to Function**
by Tara Kirkpatrick
Local interior designer Randy Davidson created an elegant masterpiece that showcases the homeowners' lifestyle.
- 38 The Many Levels of Luxury**
by Donna Kreutz
A second-time-around redesign by Linda Robinson stepped things up in this foothills home.
- 44 Mural, Mural on the Wall**
by Judith Ratliff
Tucson's historic scenes come alive in a midtown garden.

DEPARTMENTS

- 10 Letters to the Editor**
- 12 Events & More**
Our guide to what's happening on the home and garden front for January and February.
- 23 The Pros Who Know**
by Debby Larsen
Walter Gaby of Rug Resource is profiled.
- 25 Plant Profile**
The shrimp plant is an unusual and striking addition for your hummingbird garden.
- 100 Garden Journal**
by Mary Sisson-Eibs
Don't let this be the winter of your discontent! Find out what you can grow right now. Includes an expanded section on container gardens.



- 107 Garden Talk—New!!**
The Tucson Botanical Gardens provides tips, information and what's new on the horticultural scene.
- 108 Plant Profile**
Meet candelillia ("tiny candles"), a versatile succulent to add to your xeriscape garden.
- 109 The Source**
Where to buy everything.
- 114 Debby's Design Notebook**
Snuggle up on a cool winter night with a fun "game night" party idea.

SPECIAL SECTION

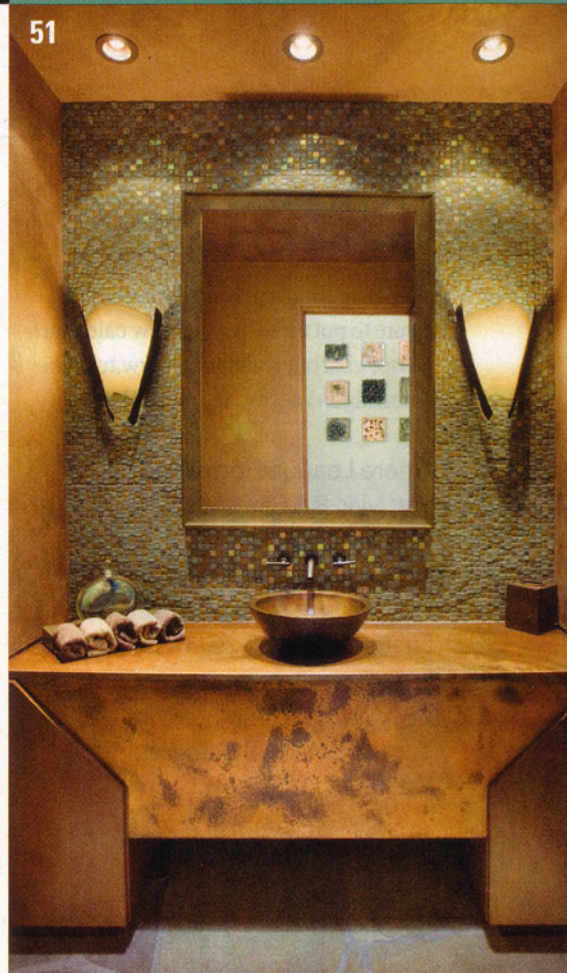
- 51-99 Great Designs**
The American Society of Interior Designers (ASID) Design Excellence Awards spotlight some of the top recent residential projects. We present some of the exciting winning entries from ASID's Arizona Chapter.

About the cover: The living room of the Holman residence in a historic area. Photography by Robin Stancliff.



26 Cover Story

Our cover story on page 26 takes us to a modern home in a historic neighborhood. On page 18 you'll see how an artist transformed the walls of a Southwestern home. Our inspiring Great Designs special section—beginning on page 51—showcases winning residential interior designs.



51

Barrio redefined

One couple became inspired to move into a historic neighborhood ... in a very modern home.

a house can say a lot about the people who live in it. Its architectural style, décor, art — even the books on the shelves — reveal the taste and values of its inhabitants. Whether it whispers or shouts their unique preferences depends on the care they invested in turning it from a house into a home.

There is no mistaking what DeWayne Holman and Eileen White-Holman's home says about them. The couple has devoted much of their time and energy to making it reflect their simultaneous love of Old World craftsmanship and modern design, and as a result, it makes a bold statement about their shared sense of style.

"We love juxtapositions, particularly between old and new," says DeWayne, who spent his career working in California's commercial construction industry. His and Eileen's affection for timeless building ▶



BY STEFANIE TELLER • PHOTOGRAPHY BY ROBIN STANCLIFF
PRODUCED BY DEBBY LARSEN



your best friend, so you may not want to
be friends to "look at"



OPPOSITE Owners Eileen and DeWayne Holman relax in their barrio home. **ABOVE** The colorful and efficient kitchen boasts metal, glass and concrete accents.



ABOVE The second-level master suite is expansive yet cozy. **OPPOSITE** Multi-paned windows in the living room frame the view of the gardens.

qualities and modern design explains why they have had so much fun personalizing a relatively new, loft-style home in Barrio Viejo, one of downtown's oldest neighborhoods.

The couple was making plans to retire in San Miguel de Allende, Mexico, a few years ago when an article in *Dwell* magazine caught their eye. It featured a local residence designed by architect Rob Paulus that had many of the same design and lifestyle qualities they were seeking across the border. Several visits to Tucson followed, and they soon realized they didn't have to move to another country to find what they were looking for.

"Originally we were looking for an adobe to remodel, but we absolutely fell in love with the barrio," says Eileen. "This neighborhood has been wonderful — it's very close, friendly and safe, without intrusion. We know more neighbors in Tucson than we knew in all the years of living in California. We are so glad we moved downtown."

The 1,850-square-foot home she and her husband ended up purchasing was designed by Paulus and is distinguished from most other barrio homes by its decidedly modern architecture. They contacted the architect and enlisted his help in making a few changes to enhance their favorite features. Upstairs, they expanded the spacious feeling of the master suite by

removing a wall and creating several cutouts to let in more natural light. Converting a walk-in closet into a small office and renovating the master bathroom completed the feeling of privacy and coziness while maintaining the suite's open, airy quality.

The lower level of the house is primarily one large living space with the kitchen, dining room and living room all flowing together. DeWayne and Eileen considered installing double doors between the living room and backyard to merge the indoor and outdoor living spaces, but they had to change plans when they discovered the load-bearing walls wouldn't support large doors. Instead, they created a unique, multi-celled window by removing several of the wall's exterior building blocks while leaving the interior metal bars in place. The window now functions as a piece of art that naturally leads the eye outside toward a native cactus garden designed and planted by DeWayne.

The kitchen, also a focal point, provides a great example of how modern décor can be sleek and intimate at the same time. Cement countertops with a glass "liff" are suspended several inches above the counter, along with a 1950s glass light fixture created by artist Eric Firestone. Green accent paint, chosen to match the color in some of their favorite pieces of art, ▶





lends warmth and interest to the room.

"This is the most modern home I've lived in," Eileen says. "With modern homes, you have to be more cautious in what you buy because you can't just junk it up with Old World things. It was a real change for us, but we found that we really like the contemporary approach."

Applying the contemporary approach outdoors led the couple to create a miniature oasis with a reverse infinity pool surrounded by bamboo. The cooking area is lit with an overhead sign that blazes "Barrio Grill" in red neon lettering, which was procured from the downtown restaurant after its owners had replaced it with new signage. DeWayne still gets a kick out of how well it complements his backyard grill in the barrio.

The couple purchased the 12,000-square-foot lot next door with the original intention of building a guesthouse, but then decided to subdivide it and build several new homes for sale. The tiny community, dubbed "Los Dos Pedros," is well underway and features five loft-style homes very similar to DeWayne and Eileen's, with modern architecture and a host of environmentally friendly features such as energy-efficient heating and cooling systems, a rainwater harvesting system, and more.

Although they haven't sold all of the homes yet, it shouldn't be hard for them to find more people who share their passion for blending contemporary and traditional styles. For one thing, they say, it keeps life interesting.

"You never know what's behind the door. Very few people walk into our home without being surprised. It's a little paradise back here." **HG**

For more information, see The Source on page 109.

ABOVE RIGHT An outdoor cooking area was built adjacent to the pool.

OPPOSITE Bamboo plantings add privacy to the patio area.



See This Home Up Close and Personal!

The Holman home will be featured on March 8 in the first of the two Opera League Home Tours that will focus this year on "Green Design for the Desert: Sustainable and Beautiful." Tickets are \$30 per Saturday or \$50 for both Saturday tours, with unique homes each weekend. See the March/April 2008 issue of *Tucson Lifestyle Home & Garden* for information on obtaining tickets and additional activities being held in conjunction with this year's tour partner, The University of Arizona College of Architecture and Landscape Architecture.

For further information, visit either www.tucsonhomeandgarden.com or www.azopera.com/getinvolved.php?subcat=specialevents.