

# Custom Home

*The art and craft of building and design*



**2013  
DESIGN  
AWARDS**



# Custom Home Design Awards

*Smart rehabs, thoughtful new construction, hard-working accessory buildings, and outdoor spaces that really matter: The projects that rose to the top this year spoke to their site and made the most of their place, said the jury, with strong concepts carried through from exterior to interior to details. Here are the Grand winners of this year's Builder's Choice and Custom Home Design Awards. Merit winners are featured on page 64 and at [customhomeonline.com](http://customhomeonline.com).*

BY BRUCE D. SNIDER, SHELLEY D. HUTCHINS, AND CHERYL WEBER, LEED AP



## RENOVATION

Grand Award

CANOPY HOUSE, TUCSON, ARIZ.

“How do we, with the least amount of money, convert this dark adobe style house into an open living space with strong outdoor connections?”

That’s the question architect Rob Paulus faced for this renovation. Adding to the challenge, the house belongs to well-known holistic health advocate Andrew Weil, M.D., who asked that his personal philosophy of natural healing be integrated into the design. Paulus’ solution was simple and efficient: demolish interior walls and add a lot of glass. A soaring canopy was added to protect that glass and generate a space that “celebrates outdoor living.” That one move captivated all six jury members. “It’s a singular bold gesture that serves multiple functions of creating shade for the house itself and an outdoor space,” admires one juror.

Weil bought the house for its oasislike landscape, so the canopy also functions as a focal point enticing occupants out to the pool and gardens. A rectangular cut-out above an outdoor living room acts as a sun dial—showing the passage of time. At night, simple landscape lighting illuminates the underside of the canopy for a soft glow. “It’s enough light to let you walk around,” Paulus says, “but you can also see the sunset.”

Cylindrical steel columns support the steel and Douglas fir awning. The columns closest to the house line up with existing supports while outside columns stand farther apart. Their placement means the columns fade into the background and the canopy appears to float unsupported. The awning sits 2 feet above the roof enhancing that illusion. The extra space also invites breezes to pass through for increased cooling. “By pulling the canopy up and away from the roof,” Paulus adds, “you still get the sense of this big blue sky that we’re famous for.”—S.D.H.

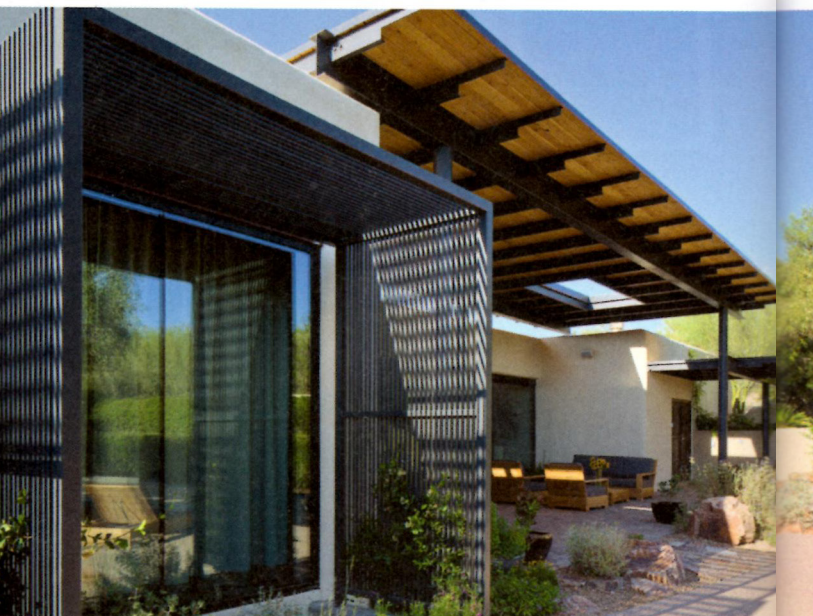
SEE ADDITIONAL IMAGES AND INFORMATION AT [CUSTOMHOMEONLINE.COM](http://CUSTOMHOMEONLINE.COM)

**Entrant/Architect/Construction Manager/Landscape**

**Architect:** Rob Paulus Architects, Tucson, Ariz.;

**Interior Designer:** Baker + Hesseldenz Design, Tucson;

**Photographer:** Cooperthwaite Photography + Productions

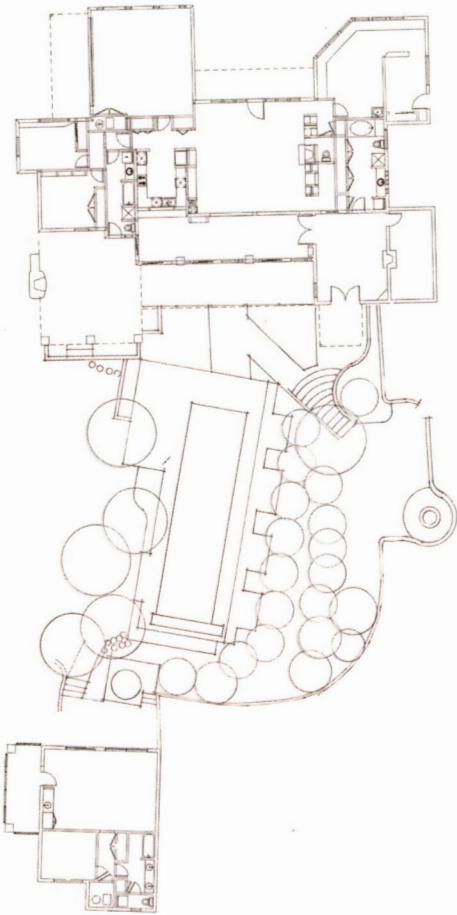


**On Site**  
Paulus worked with local steel fabricator Eric Myrmo to create the canopy as well as nearby steel screens that protect south-facing sliding glass doors. The shade boxes are fabricated from ½-inch steel tubing used in a modern trellis design and formed into a perfect 8-foot square. In contrast to the bold canopy, the more delicate screens generate a lighter, more intimate atmosphere.

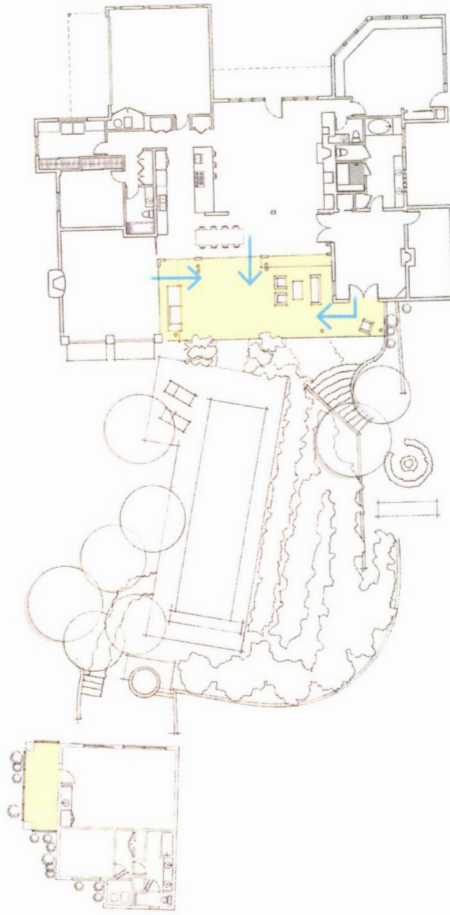
**Bold Moves** Architect and general contractor Rob Paulus selected steel to support the wood-clad canopy because it holds up in the harsh Tucson climate. Exposing the steel and painting it dark gray is a nod to the common use of wrought iron in the region. “We were trying to capture the historic adobe character of our area,” says Paulus, “but with a modern vocabulary.”



Old Plan



New Plan



**Let it Flow** The plans show how Paulus opened interiors and integrated outdoor spaces. The client—a famous proponent of holistic medicine—wanted serene and contemporary, but he also wanted earthiness. Paulus used natural materials like wood cladding on the canopy, stone steps, and repurposed brick pavers. The cut-out in the canopy lets occupants witness the passing of days and seasons as light changes.



# YOU COULD SAVE YOUR CUSTOMERS \$850\*

on average by installing the No Leak Solar Powered "Fresh Air" Skylight.

Eligible for **30%** Federal Tax Credit



## Top 3 reasons this product is revolutionary:

Solar powered so no wiring is needed to open it up and let fresh air in.

Your customers get the No Leak Promise – a 10-year installation warranty.

Easy to sell, and your customers may save money when they qualify for the 30% tax credit.

\*For information go to [veluxusa.com/taxcredits](http://veluxusa.com/taxcredits).



# VELUX®

Skylights